

# Testing update for 9am call

## **Working group:**

Suzanne Blake, Olu Brown, Michael Rutter, Jag Patel, Brian Schuetz, Mark Silis,  
Cecilia Stuopis, Ian Waitz

August 19, 2020

## *Outbreaks Drive U.N.C. Chapel Hill Online After a Week of Classes*

The university chose to abandon in-person instruction for undergraduates after at least 177 students tested positive for the coronavirus.



The University of North Carolina at Chapel Hill will move all of its undergraduate classes online starting Wednesday. Gerry Broome/Associated Press

---

Source: <https://www.nytimes.com/2020/08/17/us/unc-chapel-hill-covid.html>, accessed on August 18, 2020

DIVISION OF STUDENT AFFAIRS

## Update Following the President's Address to Students



August 18, 2020

Dear Notre Dame undergraduate, graduate, and professional students,

The spread of the coronavirus on our campus has been swift and concerning. As Father Jenkins indicated, we have implored our campus community to observe the best prevention practices advised by medical experts and made extensive modifications to campus operations. **While most community members have complied admirably, the consequences of lapses in our health and safety practices are clear. Failing to adhere to mask wearing and physical distancing at all times has resulted in significant transmission.**

We have consistently reiterated that we must adapt to changing conditions. **Due to the growth in cases of COVID-19, primarily among off-campus undergraduate students, our ability to offer a safe on-campus experience this semester is in serious jeopardy.** This letter contains information about how our campus will pause in response.



# Notre Dame Covid-19 Dashboard

Date Updated:  
8/18/2020

Total confirmed cases since Aug 3, 2020

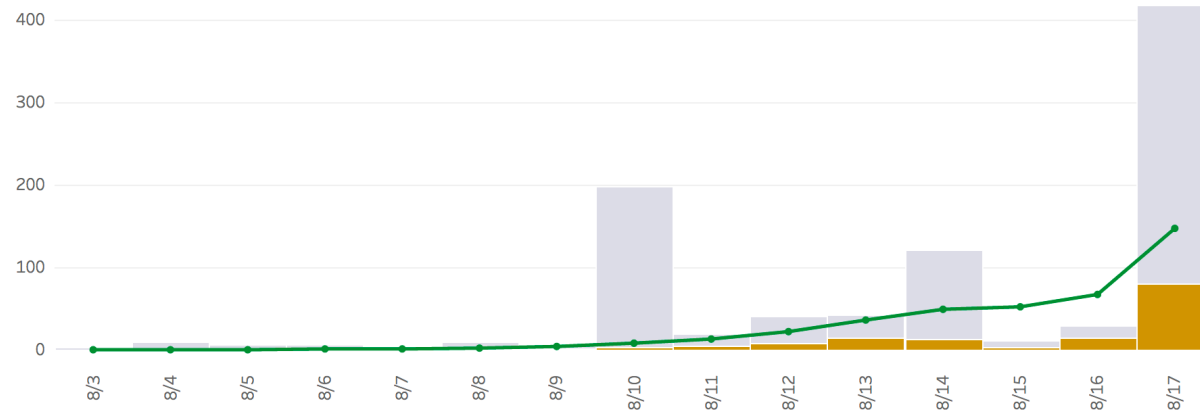
147

Total tests since Aug 3, 2020

927

## Daily Trend

■ Daily total tests ■ Positive cases by day ■ Total confirmed cases



The dashboard is updated daily at 12:00pm. Test results reflect Notre Dame administered diagnostic tests by the Wellness Center and University Health Services (including athletic team surveillance testing).

For Indiana State and St. Joseph County Information, please see the Indiana Covid-19 Dashboard: <https://www.coronavirus.in.gov/>

Source: <https://here.nd.edu/our-approach/dashboard/> accessed on 8/18/20, ND has 12,600 students

# Testing is a critical path item

- Both for the **research** ramp-up and the **academic** ramp-up
- That why we are asking for everyone's patience and flexibility as we rapidly ramp-up operations and learn what it takes to operate at scale
- **We need to get this right, *together***

# How many tests do we need to administer?

- **This is uncertain**

- More than half the people in CovidPass are not accessing the campus
- We don't know how many people will access campus as we scale up in Phase 2
- Testing is a function of frequency of access and we don't know that well yet either (although we are collecting data)
- 8% of the CovidPass users appear to not have proper authorization but are still in the system (we will be verifying or removing them)

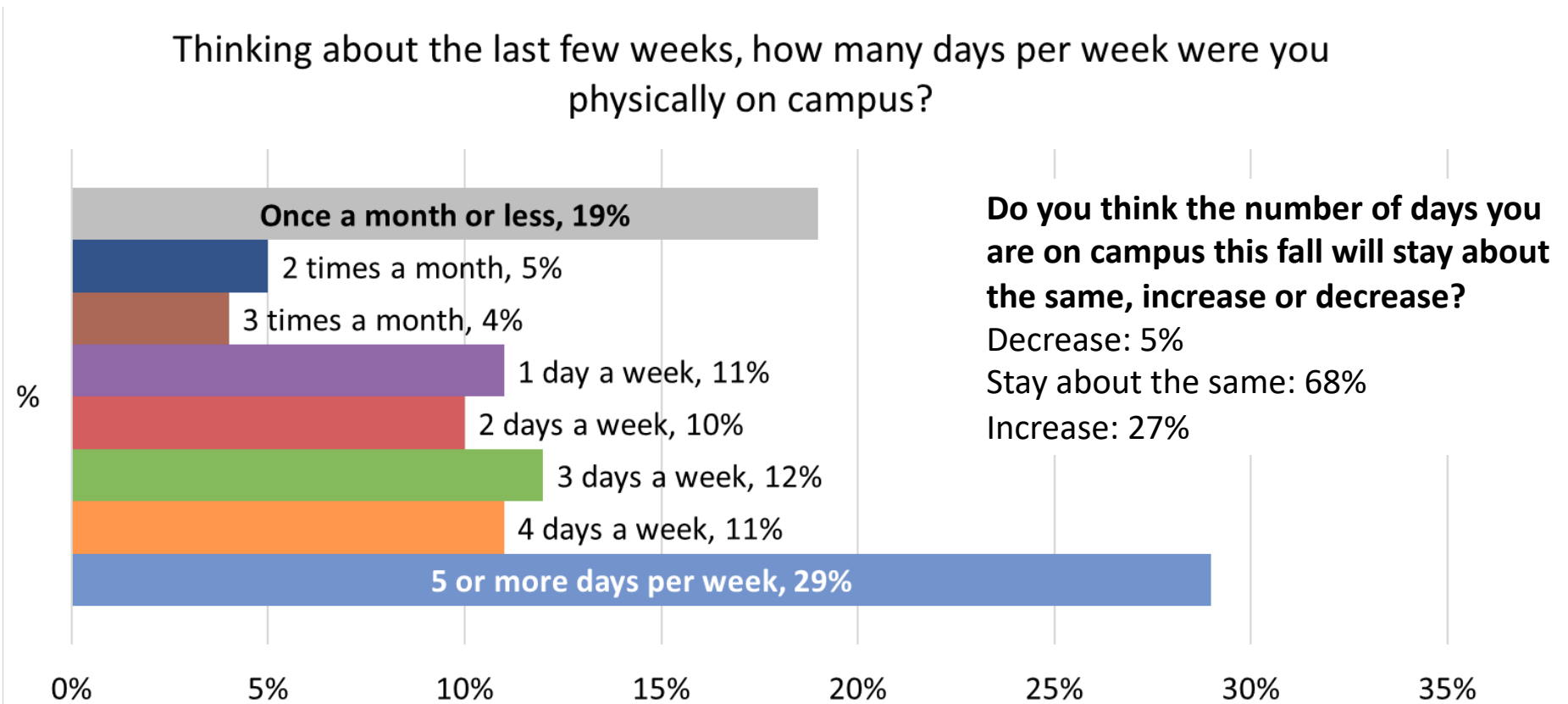
- **9,000-17,000** individuals this fall

- Will require **14,000-30,000** tests per week

- **Conducted a survey of the current 8000 CovidPass users to get a better estimate**

## Respondents (all non-residents) on campus today:


~40% are on campus 4+ times a week, enough to need testing twice a week; ~33% are on campus 1-3 days a week.





How is MIT doing with  
testing?





Wow, what a great  
couple of days

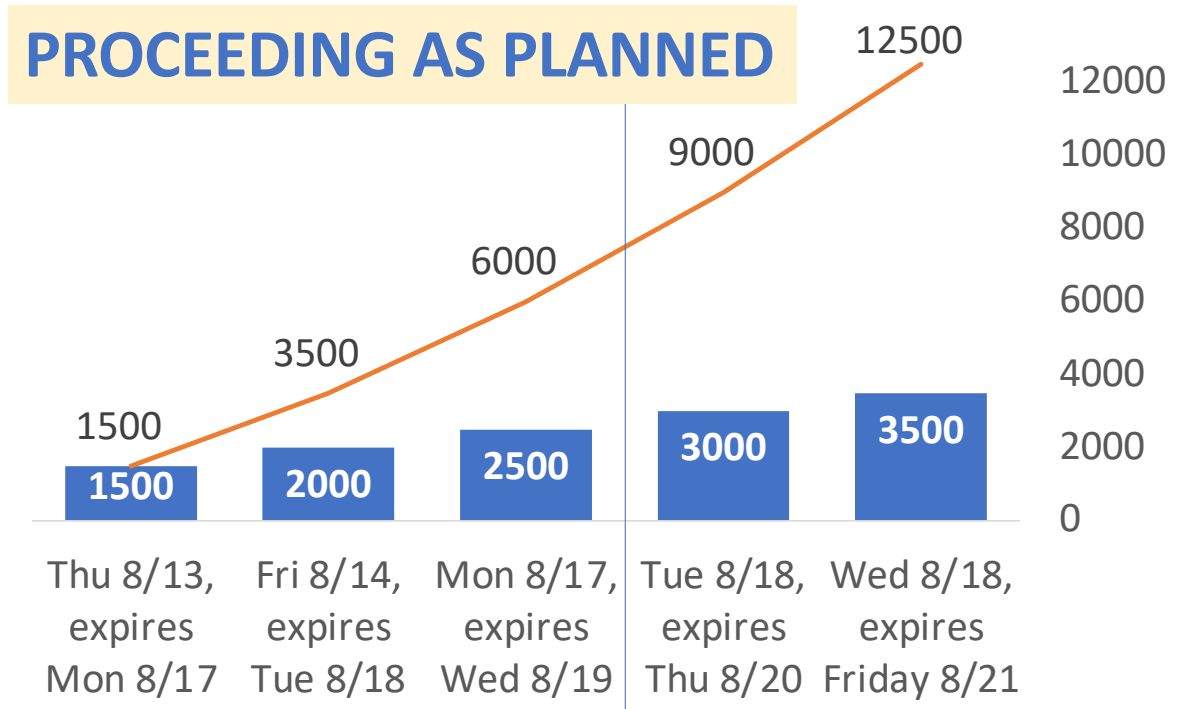
# Here is what we said we would do:

- Scale-up testing to demonstrate capability and learn quickly
- Noting that time is of the essence and this is a critical path item

S	M	T	W	T	F	S
Aug 9	10	11	12	13 Push to 1500; 465 tests at Medical	14 Push to 2000, 563 tests at Medical	15
16	17 Push to 2500; Required training notification; Survey	18 Push to 3000	19	20 Student training required	21	22
23	24	25	26	27	28	29 UG move in
30 UG move in	31 Reg Day	Sep 1	2	3	4	5
6	7 Labor Day	8 In Person Classes	9	10	11	12

# 7000-9500 Covid Pass users: plan to test them “all”\* in 5 days

- Started with invitations to residents Thursday
- Random selection of all others, 3 full testing days to comply
- Testing yield on invitations has been as low as 20-25% without requirements in place



\*As noted, more than half the users of Covid Pass are NOT accessing campus. **What is shown in this chart are invitations.** We do not know how many people will be tested.

# Here is what happened...

Monday



Tuesday



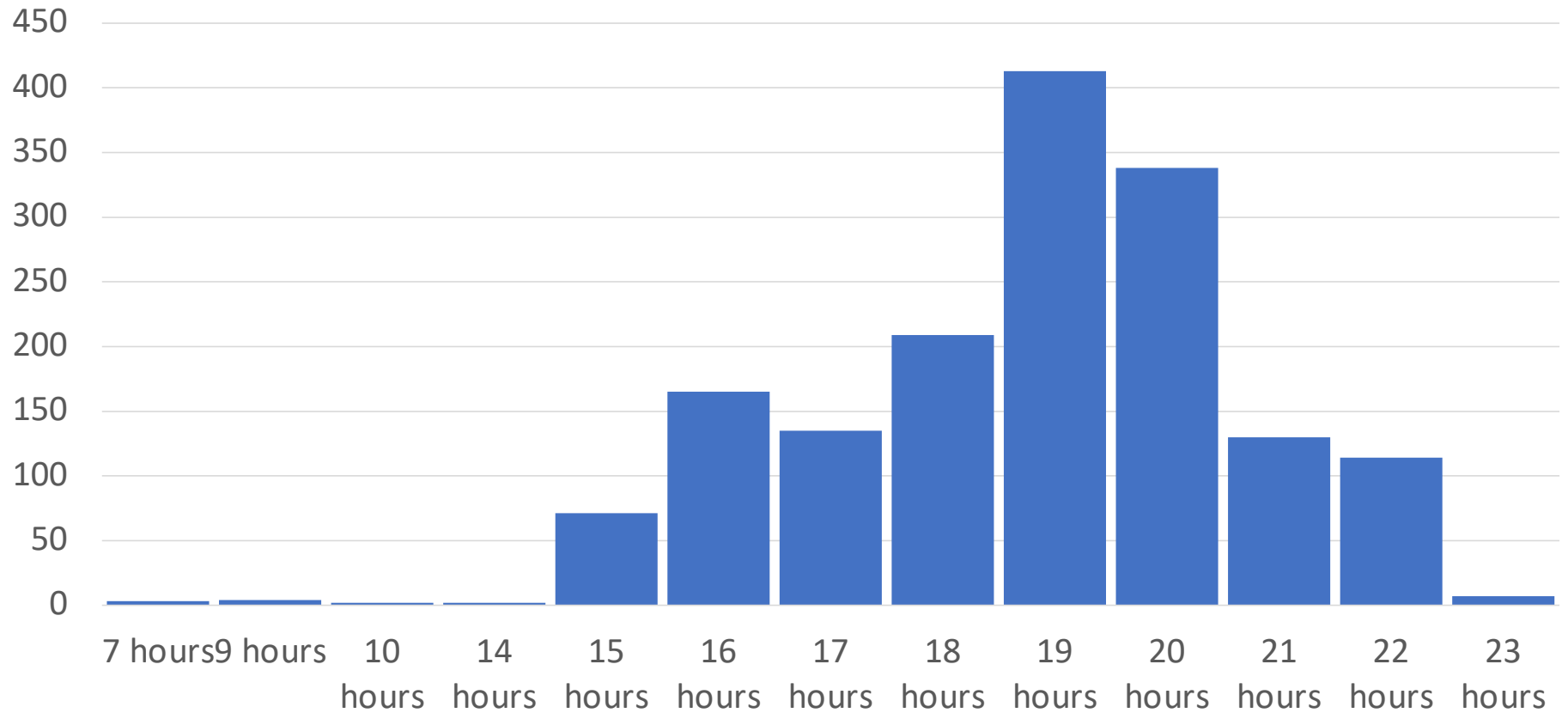
# Some responses

- From a few faculty:
  - “Someone needs to intervene ASAP”
  - “Absurdly long testing lines”
  - “You need to do better.”
  - “MIT should be leading not following.”
  - “Did you know there is a long line?”
  - “Have you thought about extending the hours or adding staff?”
  - “Have you calculated the throughput and compared it to what you need?”
  - “Have you thought about self-swabbing?”
- Ian: **“Boy, did we have a great day!”**

# Why was yesterday a great day?

- A typical testing day in early August = **200** tests
- Max testing day on June 4 = **610** tests
- Thursday August 13= **465** tests
- Friday August 14= **563** tests
- Monday August 17 = **957** tests, ~6% of all tests in the Commonwealth
- Tuesday August 18 = **1930** tests
  - 22% of all CovidPass users
  - ~20% of all tests performed in the Commonwealth
  - Maximum throughput = 300 tests/hour
- Test turn-around times are typically < 24 hours

# Testing turn-around times all under 24 hours



# The blow by blow yesterday

- By 8am the line was 90 minutes long (I joined it at 7:55am)
  - Testing throughput was 150 tests/hour
  - The line was around the block past the Kendall Hotel
- By 10:30am MIT Medical had
  - Added a second trailer
  - Added a third facility in a tent
  - Added a fourth facility inside MIT Medical for first responders
  - Testing throughput was 300 tests/hour
  - By mid-afternoon the line had been pulled back onto the plaza
  - (P.S. Brian Schuetz is a star)
- By noon we had sent out an email to CovidPass users giving a grace period for access restrictions and thanking people for their patience
- **By the end of the day we had tested 1930 people**



# We tested almost 2000 people in 8 hours

- That is without expanding testing hours
  - That started today: 5am to 5pm
- We can also expand testing days
- 300 tests/hour is roughly what we need for our most conservative estimate of testing volume if we operate long hours at 7-days a week.
- We will also pilot a Zoom booth (with remote observation of self-swabbing)
- **And all this gets much easier when the Broad Institute testing kit is approved for unobserved self-swabbing**
- Plus we are learning a tremendous amount very quickly

# What did we learn?

- Many people are missing the push notifications and want to receive a push and an email every day, this has been changed overnight [our IS&T team is crazy good]
- The 200 access approvers are not uniformly knowledgeable about the campus access policies. People are being approved who should not have access to campus.
  - We held a training yesterday.
  - We will also implement a different process for adding undergrads; they will have to be approved centrally.
  - Now we will vet all the lists.
- The team worked well in real-time to send an email to everyone in CovidPass by noon, and implement a grace period on access restrictions.
- We are also testing and scaling the compliance procedures with the students in residence. Great work being done there (thank you to Don Camelio and Judy Robinson).
  - 71% of the 1591 in residence have complied with testing (we are still trying to figure out what is going on with the 376 who have not, including 270 who haven't even signed the waiver. That is a gap that needs to be closed.
- We invited campus volunteers to help with line management.
- We improved our communications

# Prior Medical Notifications

## Medical Testing Notifications

Campus Access	Testing Frequency	Push Notification	Push Frequency	Email *	Email Frequency
Resident	Every 3 Days	✓	8am the day before the test expires	None	N/A
Frequent Campus Access	Every 3 Days	✓	8am the day before the test expires	None	N/A
Minimal Campus Access	Every 7 Days	✓	3 days before the test expires	None	N/A

# New Medical Notifications

## Medical Testing Notifications

Campus Access	Testing Frequency	Push Notification	Push Frequency	Email *	Email Frequency
Resident	Every 3 Days	✓	Daily 12:01am	✓	Daily Between 12:01am – 2:00am
Frequent Campus Access	Every 3 Days	✓	Daily 12:01am	✓	Daily Between 12:01am – 2:00am
Minimal Campus Access	Every 7 Days	✓	Daily 12:01am	✓	Daily Between 12:01am – 2:00am

\* Email notifications to begin on 08/19/2020

Please use the new website! <http://covidapps.mit.edu/>

**MIT Covid Apps**

Managing campus access during the COVID-19 pandemic

[Home](#) [Covid Pass](#) [Covid Access](#) [Medical Testing Information](#) [Resources and Support](#) [Applications](#) [Updates](#)

To safeguard the health and well-being of our entire community, MIT requires anyone who routinely accesses campus buildings to be tested for COVID-19, complete safety training, and to comply with MIT, state, and local policies and guidelines. **Covid Pass** is the application created by MIT to enable community members to complete all requirements for maintaining access to campus buildings.

**Start here:**

1. Get Covid Pass: visit [covidpass.mit.edu](http://covidpass.mit.edu) or download the MIT Atlas mobile app for **iOS** or **Android**.
2. Get **tested for COVID-19** at MIT Medical.

The Covid Pass app walks you through the process, and provides you with daily notifications (email and mobile push) early each morning (EDT) about your medical testing status. The message tells you until when your latest test is valid, and when you will need to be re-tested to maintain your access to campus buildings. Learn more about the **Covid Pass process** and requirements for maintaining campus access.

If you have already been using Covid Pass, note that **COVID-19 viral testing is now required** for anyone who routinely accesses campus or is living on campus in MIT residence halls.

Designated individuals in each school, department, lab, and center (DLC) use the Covid Access application to grant and manage access to campus buildings. **Learn more about Covid Access.**

**Get your Covid Pass using MIT Atlas on your phone**

Download on the **App Store**

GET IT ON **Google Play**

You are cleared for access to these buildings until 5pm on July 28, 2020

- E-14
- W-92
- N-52

MIT Building Access Points Map

Summary of Campus Access

**New**

Access to campus streamlined through MIT Atlas.

**MIT COVIDPass Mobile** Copy link

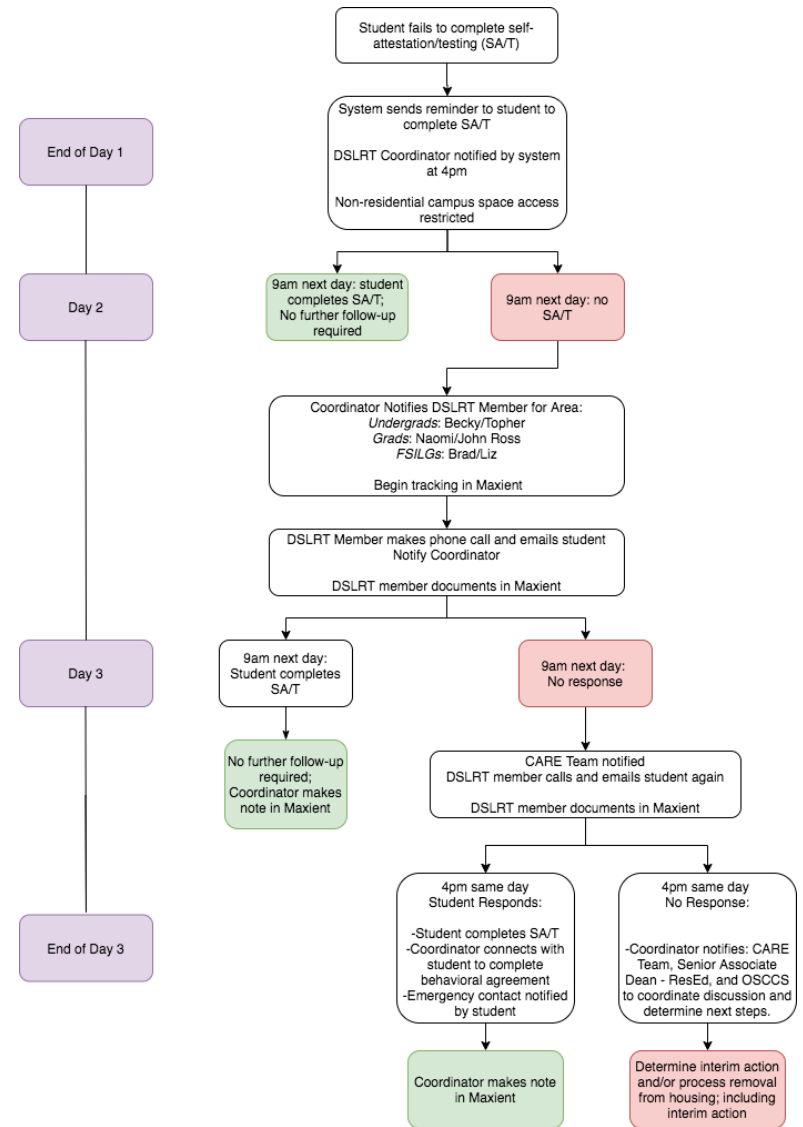
# Please use the help desk!

(CovidApps-help@mit.edu)

- **What do I need to get tested?**
  - The clarification on Medical Med Testing pre-requisites (being in Covid Pass, given access to campus etc) was a source of angst for many today.
  - Resolved with: Before visiting MIT Medical for a drop-in COVID-19 test, please check your Covid Pass access by visiting [covidpass.mit.edu](https://covidpass.mit.edu). If you see a message saying, "You do not have access to this application," you cannot be tested at the MIT Medical trailer.
- **Not all residents are in Covid Pass – these have been identified, often missing information prevents them from getting Covid Pass.**
  - People are still having issues with what defines a Family Member and Division of Student Life updates.
  - "How can my mother be tested if..." or Why don't I have Covid Pass, I live here...
- **People don't know how often they have to test or when they have to test.**
  - The "I took a test a few days ago but am now being prompted in the covidpass app to retest ..is this true?"
  - When will I be notified in the app? My roommate has been but I have not be notified. Followed by should I wait or just go for testing now.
- **Issues and complaints**
  - If MIT is against gatherings, the line for testing is too long
  - It's not safe for me, people are not wearing masks etc
  - I am disabled and need testing , I can't wait in line.

# Revised compliance/discipline process for campus residents

- Starts with access restriction and an email message at the end of the testing day + list goes to DSL
- 9am the following morning DSL begins follow-up
- If student does not comply by the end of that day (now 24 hours out of compliance), it is escalated
- Applies to health attestations, testing requirements, waivers, etc.



How is it going so far today?

100 people in line at 5am

620 tested by 9:30am

15 minute wait right now





## Next steps

- We will have a tabletop exercise for the close-in team on big failure modes later this week
- We need some help asking some people for patience
- Vetting the access lists
- Will get data on campus access at the end of week to inform scheduling
- Imposing access restrictions for those not in compliance
- Good news: some people are already on their second test of the week following the protocol!

Our objective was to scale up quickly and learn how to make the system work.

That is happening, warts and all.

**We thank everyone for their patience and flexibility (and compliance!) as we learn how to do this critical work together.**