



Emergency Management
Massachusetts Institute of Technology



MITMedical

Lessons Learned from Positive Cases

September 25, 2020

Suzanne Blake

Director, MIT Emergency Management

Cecilia Stuopis

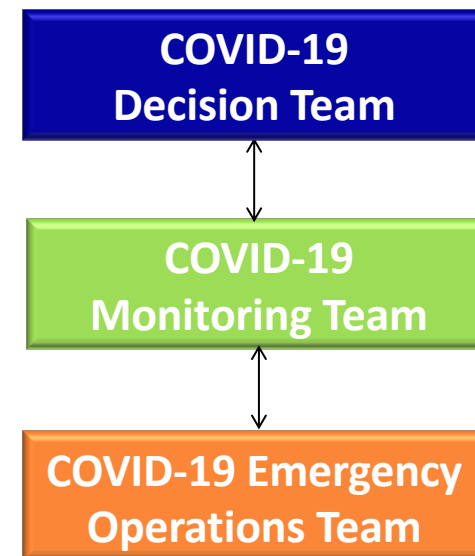
Medical Director, MIT Medical



COVID-19 Emergency Management Structure



- ❖ Began process on August 20, 2020
- ❖ Daily meetings
- ❖ Analyzed 34 positive cases so far
 - Vast majority are off campus cases
 - Positive individuals in isolation quickly
 - MIT close contacts in quarantine quickly (50)
 - All provided needed support
- ❖ Discussed other cross-cutting issues
- ❖ Decisions made quickly
- ❖ Process improvements implemented
 - Communications and notification
 - Coordination
 - Cleaning process



Lessons Learned from Contact Tracing



- ❖ Off-campus roommates
- ❖ Travel
- ❖ Off-campus gatherings
- ❖ Proper mask use
- ❖ Actual social distancing
- ❖ Eating; sharing food
- ❖ Outdoor activities
- ❖ Symptomatic cases should not go through the asymptomatic testing program
- ❖ Multiple associations
- ❖ 90-day positives
- ❖ Working with Cambridge

The Story Behind the Positives



THANK YOU!

CONNECT WITH US



@MITPREPARED @MITALERT



/MITPREPARED /MITALERT

VISIT US



[PREPARED.MIT.EDU](https://prepared.mit.edu)

[EMERGENCY.MIT.NET](https://emergency.mit.net)

