

COVID-19 Vaccine Planning Update for the MIT Community

December 16, 2020



MIT
Emergency
Management



Commonwealth Vaccine Plan



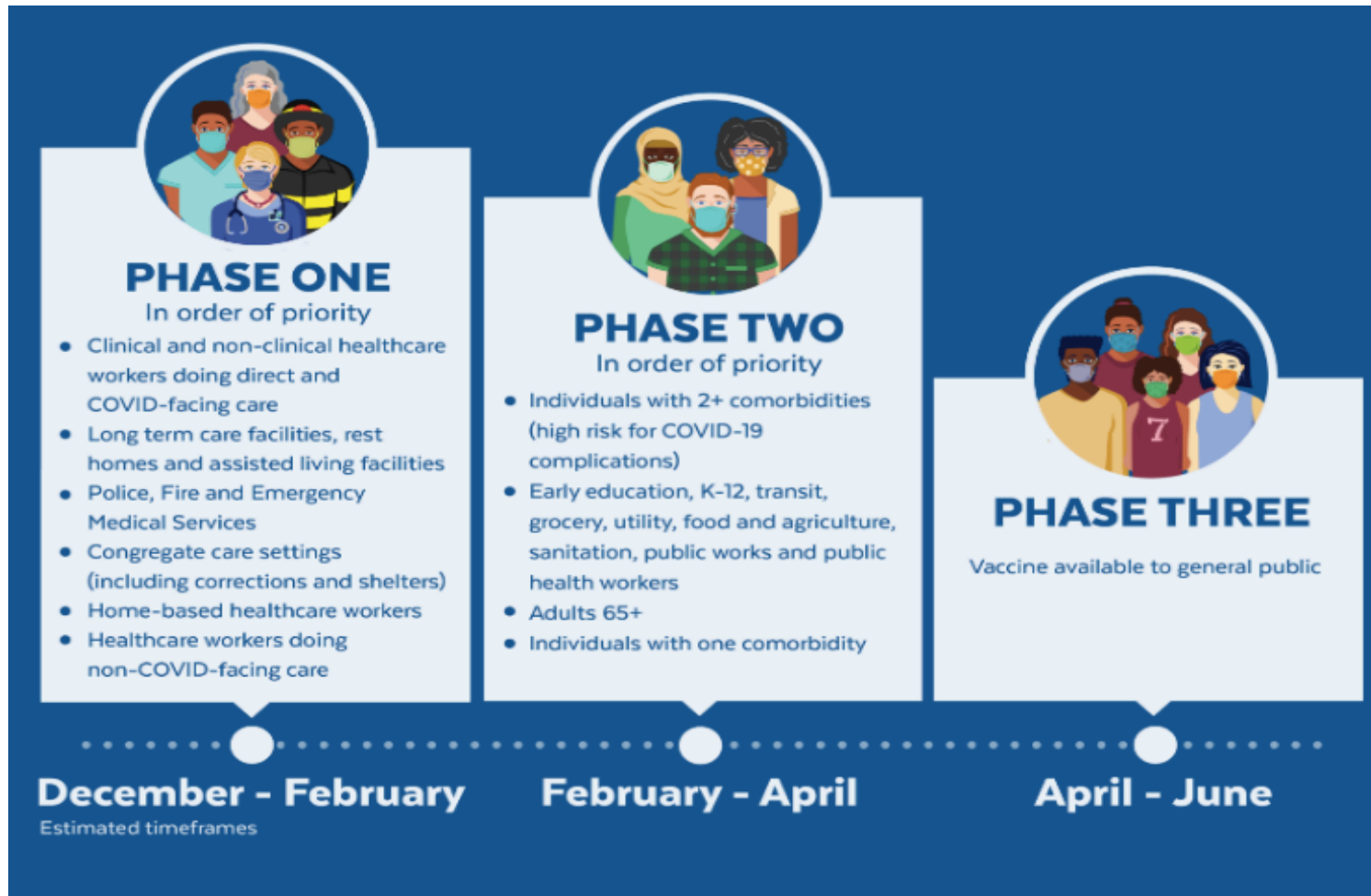
- Massachusetts Vaccine Advisory Group
- MA vaccine plan submitted to Federal government on December 4th
- Plan contingent upon FDA approvals (Pfizer already approved, Moderna upcoming)
- Will receive 300,000 of the first dose by the end of December
- On December 4th, placed an order for 60,000 first doses, arrived in Mass on December 14th
- Will get to 32 hospitals that provide geographic coverage across the state; MA will work with other hospitals to distribute vaccine in the months ahead
- Hospital providers are ready and have been notified; guidance and training provided
- List of provider sites will expand in the coming months; when available, all health care institutions will have access to the COVID-19 vaccine *for their patients*

Commonwealth Vaccine Plan



- *Committed to equitable distribution of the vaccine; communities of color are prioritized*
- *Education and outreach about the safety of the vaccine is paramount to success*
- Vaccine distribution will be a long process, timelines could change based on production
 - From Mass DHE: Universities should plan for the spring semester to look similar to the fall semester
- Will work with the federal government on safe distribution of these vaccines; could evolve over time with other emergency use vaccines
- Two doses; six weeks to obtain immunity
- Several months away from vaccinating the majority of the people in Massachusetts
- *Critical that people continue to follow the state guidance (masks, social distancing, etc.)*
 - Not enough data to know if contagion could occur from vaccinated individuals

Commonwealth Vaccine Plan



MA COVID Vaccine site:
<https://www.mass.gov/covid-19-vaccine-in-massachusetts>



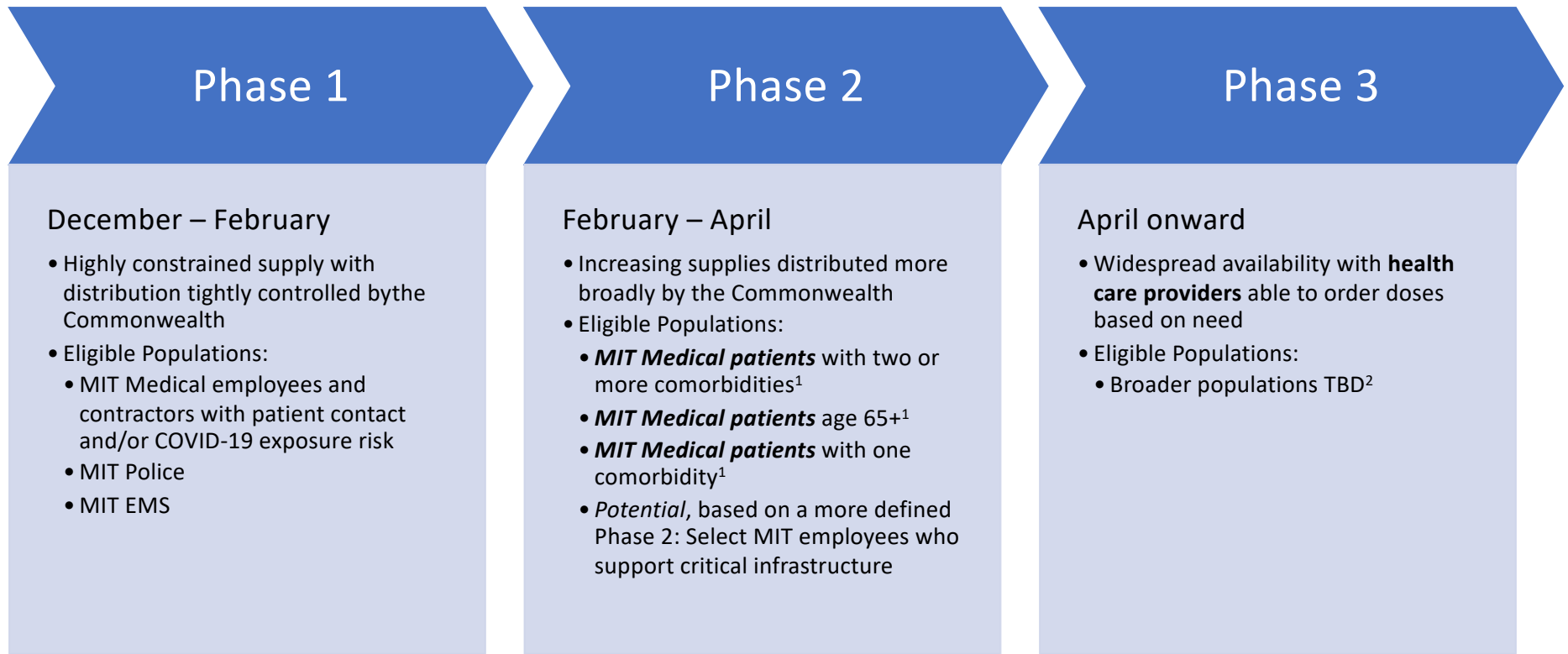
List of comorbidities:
<https://www.cdc.gov/coronavirus/2019-ncov/need-extra-precautions/people-with-medical-conditions.html>

Commonwealth Vaccine Plan



- Distribution is hospital and medical provider based, NOT employer based
 - Patients of MIT Medical will be eligible (all enrolled students and employees who receive care at MIT Medical)
- Still much uncertainty about Phase 2 and priority groups
 - Most likely based on government services, not services within a private entity
 - Note that higher education institutions are not specifically included in Phase 1 or Phase 2
- The federal and state governments determine distribution
 - MA determines the number of doses we are eligible for, when we get them, and who we give them to
 - MIT needs to follow the Commonwealth's plan
- We will communicate often with the MIT community as the process evolves and we learn more; setting expectations is critical
- We will need to follow current public health guidelines throughout all three phases

MIT Medical COVID-19 Vaccine Approach



Notes:

¹ Other members of the MIT community with comorbidities or over age 65 should contact their health care provider for COVID-19 vaccinations

² Recommendation to contact personal health care provider for vaccinations likely to continue throughout Phase 3